

ACCESSORIES



LIFT-OFF GRIDDLE

12" - \$ 274.00
24" - 370.00

- Designed to fit the CHP-series Hot Plates
- Easily converts Hot Plate to Griddle
- Hot-rolled steel with #304 Stainless Steel sides
- Stainless Steel drip tray and lift handles



Rolling Rod Grate

(ordered w/unit): \$200.00 / per foot
(ordered separately): call for pricing

- Available to fit CRB, LRB & RLRB-series Char Broilers
- 1/2" steel rolling rods reduce food sticking
- Ideal for chicken or fish



Plate Shelf

\$230.00 / per foot

- Available for all Connerton models
- 16 gauge, #304 Stainless Steel for durability and easy cleaning



Wok Ring

Fits CHP-series \$ 200.00
Fits CSP-series 250.00

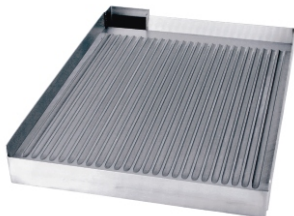
- Provides stable base and flame concentration for wok use
- Designed for CHP/CSP Hot Plates and Stock Pot Range
- #304 Stainless Steel for durability and easy cleaning



Lava Rock

(bag) \$ call

- Non-manufactured, volcanic rock provides even heat distribution
- For all Lava Rock Char Broilers



Grooved Griddle

Add:
12" to 24" \$ 770.00
25" to 48" 1280.00

- Available on CG & CEG Griddles
- Available on Over/Under Fired Broilers

The Connerton Company

Telephone: (714) 547-9218 Fax: (714) 547-1969
www.connertoncompany.com